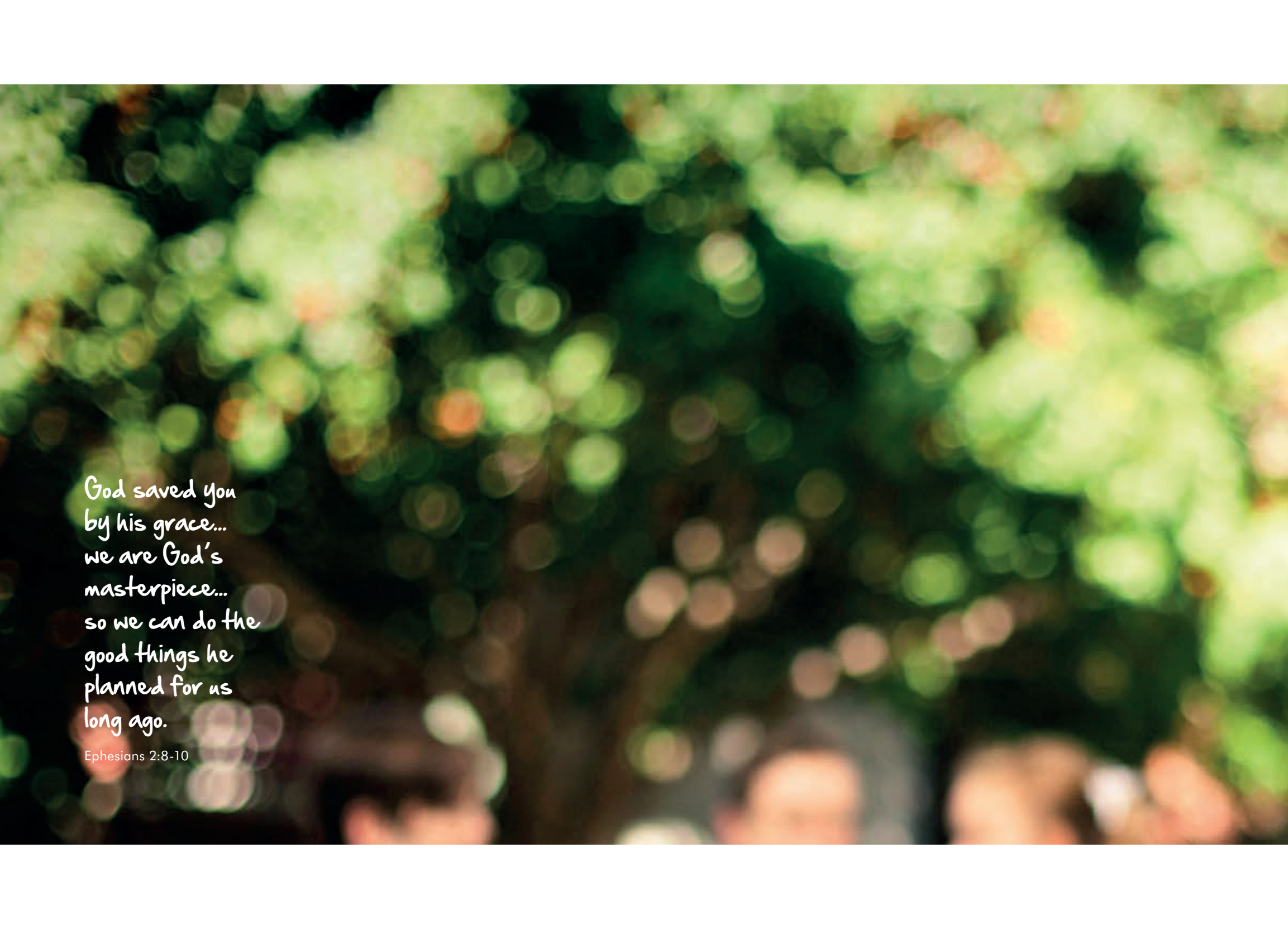




CABOOLTURE.



GRACE
LUTHERAN
COLLEGE
EST. 1978



God saved you
by his grace...
we are God's
masterpiece...
so we can do the
good things he
planned for us
long ago.

Ephesians 2:8-10



CABOOLTURE.

A photograph of several students in school uniforms walking along a paved path. In the foreground, three students are walking towards the camera: a girl on the left in a striped dress holding a book, a boy in the middle in a white shirt and dark shorts, and a girl on the right in a striped dress. In the background, two more girls in striped dresses are walking away from the camera. The path is bordered by green grass and various plants, including tall reeds and yellow flowers. A brick building is visible in the background. The text 'THE GRACE WAY.' is overlaid on the left side of the image, enclosed in a white circle.

THE GRACE WAY.

Grace Lutheran College is, by the grace of God, a Christian community. It aims to continue the preparation of young people for a life of faith and service so that God will be glorified in the world.

THE GRACE WAY...

It's not just what we do but the way we do it.

The Grace Way is about the small gestures that mean big things to Grace families. When your child joins Grace so do you. We welcome your entire family into our community.

Together, we are Grace.

We exist because our community, parents just like you, wanted a school like Grace. The Rothwell Campus was established in 1978 by the Lutheran Church in response to requests from the Redcliffe community. Following similar requests from the Caboolture community, Grace Caboolture Campus was established in 2008.

Many of our families say they chose Grace because of how we make them feel – the warm actions, selfless gifts, altruistic endeavours and kind words. They entrust their children to us, safe in the knowledge that Grace provides a secure, supportive environment for all students.

When children are born their world is full of possibility. As a parent, you want to give them every opportunity to achieve their dreams. At Grace, we know that not everyone is a scholar, not everyone is good with their hands, not everyone is good on the sports field or dance floor, but everyone is good at something. Our role is to help students discover it.

Every child can experience Grit at Grace.

Every child can Grow at Grace.

Every child can find Grace at Grace.

Your aspirations are ours – we work in partnership with our parents to encourage your child to uncover who they are and explore what they love doing. As their confidence grows so does their capacity to strive towards their ambitions.

This is the Grace Way.





GRIT.

We know that successful adults combine excellence in their chosen field with character. A key component of character is grit, a mix of passion, perseverance and patience.

GRIT. A PASSION TO STRIVE FOR

"He has returned as a more mature, considerate, respectful, appreciative and humbled young man. He has overcome some big physical, mental and emotional hurdles to have the experience of a lifetime that will have definitely helped to shape him into the man that he will become." Parent of student recently returned from Googa Outdoor Education experience.

We know that successful adults combine excellence in their chosen field with character. A key component of character is grit, a mix of passion, perseverance and patience. Young people with grit never give up, they get the job done, they break through barriers, they learn through trying even if the effort is hard.

At Grace your child will have many exciting new things to try –inside and outside the classroom. We help them uncover what they are good at and guide them to become better at it. With **more than 50 curricular and 100 co-curricular options** across both campuses from Arts to Science to Music to Sport to Service to Debating – we're confident your child will discover their passion.

We offer our students the opportunity to take safe risks because we know that it is only by practising how to deal successfully with change and challenge that they build their resilience 'muscle'.

A highlight of the curriculum is **Googa, a beautiful Outdoor Education facility** near Blackbutt, and our third campus. All Year 10 students attend Googa for four weeks under the direction of highly trained and specialised staff. Through a staged approach, our students are immersed in activities that they might otherwise miss or take for granted in the home environment. These include adventure activities, hiking, camping, daily cooking, washing and cleaning, responsibility for feeding livestock, preparing devotions, as well as journal and letter writing. Skills learnt at Googa assist them to grow academically and personally in the final two years of school and beyond. The aim of this journey is for the students to hone self-reliance and team work skills, and understand their spiritual path.

At Grace we demand respect – of each other and most importantly of ourselves. We teach your child that **character means**

choosing what is best even when no one is looking. We mentor our students to become accountable for their behaviour and repair harm through a clear and consistent process for behaviour management and conflict resolution.

Grit means looking outwards as well as within – having an awareness of the world around us and a willingness to get involved. Grace students are given many opportunities to learn and serve in the **local and global communities** at one of our four partner schools in Japan, Indonesia, China and Germany or visit to serve or learn in Cambodia, Africa and USA. We know that when you meet different people face-to-face in challenging contexts, it takes courage, but it changes you for the better.



A young man in a school uniform (white polo shirt with a crest, brown shorts, and white socks) is walking alongside a man in a white dress shirt and a blue tie. They are both smiling and looking at each other. They are walking on a paved path in a lush garden with various plants and trees. The scene is brightly lit, suggesting a sunny day.

GROWTH.

Young people with a growth mindset are confident, successful, purposeful, engaged, creative and co-operative.

GROWTH. A PERSON TO BECOME

"I don't need to be the best IN the world, but to do my best FOR the world." Year 11 student

"We have a new person in our house who once again loves school, learning and all things new: we are really grateful."

Letter from a Grace parent

At Grace we **encourage excellence and effort**: just showing up isn't good enough, we want our students to grow and change through testing themselves against their personal best every day. It is important to know though that your child can feel proud of themselves even if they don't come first. They learn that true success is always measured by their own possibility, not against the achievements of someone else.

Young people with a growth mindset are confident, successful, purposeful, engaged, creative and co-operative. We believe in our students and inspire them to believe in themselves. We know they can do more than they think they can and teach them that mistakes are simply opportunities for learning, not excuses for giving up.

Grace supports our students as they develop into independence with role modelling and some gender-specific programmes to **develop young men and women of substance**. We believe that leadership is a vital part of a senior student's role, and all students are able to serve as leaders in

a range of areas: Student Representative Council, volunteer academic tutors and ambassadors, and through mentoring younger students in performing arts, sports and faith and service activities.

Your child is given clear goals and we track individual students' progress. Timely feedback to students and parents is provided so no-one falls through the cracks. Grace offers targeted literacy and numeracy development as well as an **extended academic enrichment programme and learning support** with specialist teachers.

Thanks to the growth of our reputation in challenging and extending students with significant academic gifts, Grace is attracting a growing number of students who are interested in these opportunities. We believe the world needs gifted people who develop and use what they have for the sake of a better world.

A happy student is an engaged student. School can be a serious business at times but we recognise that young people need to

enjoy learning and know that, particularly in secondary school, they also need plenty of variety and challenge. They want teachers who take them seriously, but who also have a sense of humour. At Grace, learning is 'hard fun'.

Creative expression isn't just through the arts; your child will be stimulated to pose and solve problems, design, make and do beautiful things in all areas of the curriculum. They will also join a team – whether in the classroom, on the sporting field or stage – and learn the skills of working with others to achieve a goal.

Whether your child is at the beginning in Year 7 or is nearing the end in Year 12, they will face many decisions including subject choices, career paths and social interactions. By teaching our students that choices have consequences and that we stand beside them as they make those choices, we help them navigate through the important decisions required as they grow through their school journey.



GRACE. A PURPOSE TO LIVE BY

'My son stands straight. He knows who he is.' Parent of past student

'Grace is a fitting name for this school.' Year 12 graduate

Grace is a **Christian community** united by a belief in God's grace: God loves us and wants the best for our lives. We respond by caring for each other and welcoming others, even if they are different from ourselves.

As a family, we work together as teachers, parents and students in the lifelong process of Christian education. We aim to help each other develop, not just knowledge, but wisdom, and to nurture each other into whole people.

Young people with grace are valued, they feel included, safe and supported. As a consequence, they are thoughtful, helpful, empowered and hopeful. Because we believe God's love is a free gift available to everyone, we welcome your child – just as they are. We believe everyone has special gifts that should be developed, for their sake and for others.

At Grace, our students usually find it easy to make friends because of the many other young people with interests and values just like theirs.

You and your child will join a **diverse and inclusive** community; we encourage enrolment from a broad range of students and seek to support individual interests and needs. Our quality staff are selected for their teaching or professional excellence, character and grace.

As a Lutheran School we offer an accredited Christian Studies programme which is biblically-based, academically rigorous, and reflective. It includes study of ethics, philosophy, and comparative religion.

We encourage thought; **ours is a thinking faith**. Through regular worship, devotions, and voluntary Christian youth groups, our students can question and express different ideas respectfully. Our large student Faith and Service Team initiates and leads activities and a highly regarded, systematic pastoral care, wellbeing and life skills programme means we build sustainable and mutually respectful relationships with families.

At Grace our students learn about problems in their local community as well as the world beyond. We support them to **take action to serve others** who need our help and teach them that even a little can mean a lot. When a student feels cared for, they tend to become more caring and it is always inspiring to hear about past and current students who are making a real difference in the world.

Your child will come to understand that life takes on a whole new level of meaning and joy when they go beyond themselves. Hope is contagious – and Grace is a community of hope. We know that through faith in God and each other, we can play our part in changing things for the better.



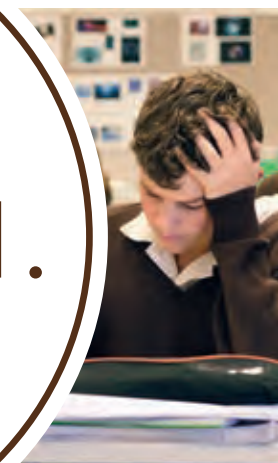
A woman with her hair in a ponytail is shown in profile, holding a lit candle. She is looking down at the candle. The scene is backlit by warm, golden light from a large window, creating a soft glow around her and the candle. The background is out of focus, showing what appears to be a church interior with blue chairs.

GRACE.

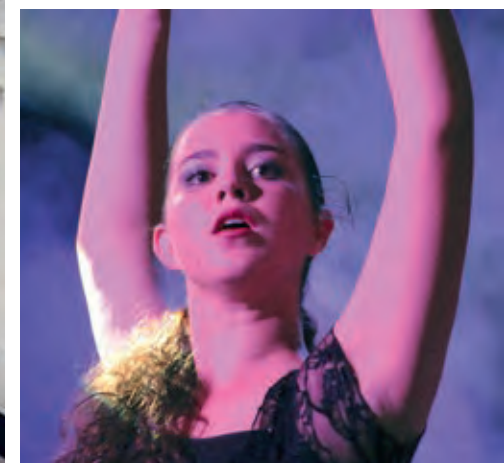
Grace is a Christian community united by a belief in God's grace. We support our students to take action and serve others who need our help, teaching them that even a little can mean a lot.



GROWTH.



GRIT.





THE GRACE DIFFERENCE AT CABOOLTURE.

Caboolture Campus is a place where your child will be nurtured and respected. The close-knit campus offers a village community feel where all students are known by all staff.

Enrolling your child at Caboolture enables them to experience a Lutheran education from Prep to Year 12. Students can commence at St Paul's Primary School right next door and transition seamlessly to Caboolture in Year 7.

Brand new, air conditioned, facilities have been designed with the learner in mind and combine contemporary building principles with the latest trends in flexible educational spaces incorporating a range of learning technologies.

A broad range of co-curricular activities and subject choices are offered including all university pre-requisites and vocational options. These are enhanced by Science and Computer Laboratories and elective areas with specialist facilities for Art, Home Economics and Industrial Technology. A dedicated Dance and Drama Studio, equipped with the latest in digital lighting technology, supports our excellent Performing Arts program.

Other facilities include:

- 2 full size ovals;
- 4 science laboratories;
- 2 art centres;
- 3 integrated computer labs;
- a technology workshop;
- a drama studio/theatrette;
- 3 music suites;
- an extensive food and hospitality centre with fully operational commercial kitchen;
- a counselling/student advisor centre
- supervised tutoring and support until 5:15pm;
- an extensive Library/Resource Centre;
- a multi-functional special education/vocational education centre.

Students at both campuses also have access to specialist subjects, activities, Library, IT resource and facilities at the other campus. They meet for combined celebrations and social events and participate in Grace high-performance sports teams and cultural activities.



A photograph of two female students in a library. The student on the left is wearing a white and grey striped school uniform with a dark tie and is holding a grey folder. The student on the right is wearing a brown school sweater over a white collared shirt and a grey and white striped skirt, and is holding a small book. They are both smiling and looking at each other. The background is filled with bookshelves packed with books.

SUPPORT.

A Grace distinctive is our out-of-school hours supervised study, homework help and tuition service four afternoons per week in the library and Senior Studies Centres.



GIFT.

...an educational experience for your child that is not just good, not just better, but the best it can possibly be for them and your family.

A GIFT FOR LIFE.

Choosing a school for your child is one of the most important decisions a parent will undertake. We appreciate the investment you are making and strive to deliver an educational experience for your child that is not just good, not just better, but the best it can possibly be for them and your family.

As a school of choice for teachers we are able to attract and retain the best and this is reflected in a strong academic focus where over 80% of Grace students study subjects that lead to university.

Our school is a **leader in Science, Technology, Engineering, Mathematics, Robotics, and Astronomy**. We have a culture grounded in intellectual rigour, student engagement and teacher quality. Academic enrichment extends to debating, chess, and special excellence days.

Students can be broadening their interests and learning at Grace until the early evening. A Grace distinctive is our **out-of-school hours supervised study, homework help and tuition service four afternoons** per week in the Library and Senior Studies Centres. This helps to make life easier for working parents and for siblings who are involved in different co-curricular activities.

An award winning careers education and advice programme places an emphasis on students following the pathway that is best for them. Grace has a comprehensive **Vocational Education Training (VET) programme** that includes options such as school-based traineeships, access for students at both campuses to the brand new Trades Skills Centre at Rothwell, a state-of-the-art facility for construction, furnishing and engineering subjects along with industry partnerships, and certificate courses on and off-site.

Our students are employees of choice in local businesses and for students who aspire to follow a vocational pathway we provide a wide range of subject offerings, school-based traineeships, apprenticeships and university courses. Grace students can choose a VET pathway to get a head start on a trade. A VET pathway offers points towards a Queensland Certificate of Education (QCE), nationally recognised qualifications and trades, and the option to enter University via a Certificate III, IV or Diploma.

Learning isn't confined to the classroom – research shows that children are three times more likely to have positive outcomes with academic achievements, leadership, and behaviour if they participate in co-curricular activities.

We offer an **outstanding Sports programme** including 100+ co-curricular teams across both campuses including rugby league, futsal, soccer, hockey, volleyball, beach volleyball, basketball, touch football, water polo, cricket, tennis, netball, softball, and Australian Rules, with success at state, national and international level. The Grace Learn to Swim programmes and first-class swimming squads all utilise our heated aquatic centre at the Rothwell Campus.

The Grace Academy, provides an **exceptional Performing and Creative Arts programme** including dance, music, choir and drama, and complements the Creative Industries offering of media, film, cinematic theatre production and art. The Academy is open to Grace students and the wider community through holiday programmes, adult classes, festivals and early childhood classes.



A photograph of a family walking along a paved path in a lush garden. A woman in a light blue shirt and dark pants holds the hands of a young girl in a blue dress and a young boy in a blue shirt and grey shorts. They are walking towards the right. In the background, another woman and a young girl in school uniforms are walking. The garden is filled with green foliage and trees.

GRACE FAMILY.

*Everyone belongs at Grace...
We warmly welcome the active participation of our parents
and grandparents in assisting us to educate your children.*

TOGETHER, WE ARE GRACE.

Parents are free to choose either campus depending on their location and needs. The Grace Way - our ethos, standards, expectations and community - applies equally to both campuses.

There is an excellent education available for all sons and daughters in the Grace family through Lutheran Schools. Grace College has strong connections with our **Lutheran Partner Primary Schools and Early Learning Centres:**

- St Paul's Lutheran Primary School and Early Learning Centre, Caboolture
- Living Faith Lutheran Primary School and Early Learning Centre, Murrumba Downs
- Grace Lutheran Primary School, Clontarf
- Living Faith Early Learning Centre, Petrie
- Grace Early Learning Centre, Redcliffe

When your family joins ours, the benefits include a consistent Christian ethos, friendships that continue across year levels, bus transportation connecting the College with our Partner Primary Schools and curriculum continuity. Students from our partner schools enjoy preferential enrolment at Grace College and family loyalty fee concessions also apply.

Pastoral Care includes a Home Class system where students meet every day in a small group that remains together, and often with the same teacher, throughout their life at school. The Home Class teacher is the first point of contact for parents wishing to communicate with the school about their child.

Both campuses offer an active Parents and Friends committee and all **parents are encouraged to participate**. Everyone belongs at Grace – students, parents, carers, grandparents, past students and staff. We warmly welcome parent and grandparent involvement in assisting us to educate your children.

Every day is open day at Grace and our extended community are always welcome to attend events such as Chapel Service, Grandparents' Day, Sporting Events, Musical Showcases, and Grace Celebrates at the end of each year.

And when your child leaves Grace, they don't leave our family. They join a network of like-minded **Grace Alumni** who enjoy the Grace Gazette twice per year, regular year group reunions, sporting groups and other opportunities to stay connected, no matter where they journey in life.

The Enrolments Coordinator is pleased to organise an individual and personalised tour at a time convenient to you.



TRAVEL.

GOING THE GRACE WAY.

With a minimum of ten bus routes servicing the Rothwell and Caboolture areas, no matter where you live in North Moreton Bay there is likely to be a Grace bus in your area.

Going the Grace way means the daily pick up and drop off is made easier. More importantly, our modern bus fleet is owned, operated and staffed by Grace Lutheran College. Buses are fully equipped with seatbelts, air-conditioning and CCTV cameras giving our parents peace of mind that their child is safe and secure.

Buses to and from the Rothwell Campus

- Bracken Ridge, Shorncliffe, Sandgate, Brighton and Clontarf
- Bribie Island and Sandstone Point
- Caboolture, Morayfield and Burpengary East
- Dayboro and Frenchs Forest

- Eatons Hill, Warner
- Everton Hills, Albany Creek, Aspley, Carseldine, Griffin, Living Faith
- Joyner, Kallangur and North Lakes
- Narangba, Dakabin and North Lakes
- Scarborough, Redcliffe and Clontarf

Buses to and from the Caboolture Campus

- Beachmere – Bribie Island
- Sandstone Pt – Bribie Island

**Information correct as at February 2016*

Additionally, there are public school bus and train services available to students. The Caboolture Station, two kilometres from the Caboolture Campus, provides regular travel for students from the north and south. From late 2016, the Moreton Bay Rail link will provide regular train services to Rothwell Station, 800m from the Rothwell Campus.



ENROLMENT APPLICATION

Thank you for considering Grace Lutheran College for your child's education. Please complete this enrolment application and return to the College.

This Enrolment Application, if accepted by the College, will form part of the Enrolment Agreement. It is important that all sections of this Enrolment Application are completed honestly and accurately and full disclosure is made. Grace Lutheran College relies upon the statements made within this Enrolment Application. If untruthful, false or misleading statements are made or full disclosure is not made, the ongoing enrolment of your child may be jeopardised.

STUDENT DETAILS

Please use a separate form for each child

To attend: ☐ Caboolture Campus ☐ Rothwell Campus

Surname

Given Name(s) ☐ Male ☐ Female

Date of Birth Birthplace

Home Address

..... Postcode

Home Phone Mobile

Enrolling Parent/Guardian

☐ Mr ☐ Mrs ☐ Ms ☐ Miss ☐ Dr Given Name(s)

Surname

Student lives with: ☐ Both Parents ☐ Mother ☐ Father ☐ Step Parent ☐ Guardian

Other

Is your child subject to custody arrangements? ☐ Yes ☐ No

If **Yes**, please state

.....

Please tick if your child's heritage is one or both: ☐ Aboriginal ☐ Torres Strait Islander

Is English your child's first language? ☐ Yes ☐ No

If **No**, what is your child's first language?

What language is spoken at home?

Student's Religious Denomination

Year to be Enrolled at Grace Lutheran College Grade

Present School or Kindergarten

Does your child have any extra requirements to enable them to participate fully in the College community? ☐ Yes ☐ No

If **Yes**, please state

.....

Does your child have an impairment or disability that affects his/her learning? ☐ Yes ☐ No

If **Yes**, please identify the type of disability or impairment

☐ Intellectual Impairment

☐ Speech & Language Impairment

☐ Hearing Impairment

☐ Multiple Impairment

☐ Visual Impairment

☐ Autism Spectrum Disorder

☐ Physical Impairment

☐ Learning Disabilities/Difficulties

☐ Social & Emotional Impairment

☐ Other

PARENT DETAILS

Mother/Guardian Name

☐ Mr ☐ Mrs ☐ Ms ☐ Miss ☐ Dr Given Name(s)

Surname

Home Address

..... Postcode

Home Phone Mobile

Email

Postal Address (if different from above)

..... Postcode

Business Name Work Phone

Mother's Religious Denomination

Father/Guardian Name

☐ Mr ☐ Mrs ☐ Ms ☐ Miss ☐ Dr Given Name(s)

Surname

Home Address

..... Postcode

Home Phone Mobile.....

Email

Postal Address (if different from above)

..... Postcode

Business Name Work Phone

Father's Religious Denomination

Parents' Relationship: ☐ Married ☐ Separated ☐ Divorced ☐ Single ☐ De Facto

☐ Other.....

FURTHER INFORMATION

Reason for Application.....

.....

.....

.....

Other Children in the Family:

1 DOB Grade

2 DOB Grade

3 DOB Grade

4 DOB Grade

Previous connection with Grace Lutheran College (present sibling, past sibling etc.):

.....

..... House (if applicable)

Family Church Attended.....

Minister's Name.....

PARENT UNDERTAKING

We have read and accept the Standard Collection Notice as per the Privacy Act and the College's Information Book and are in agreement with the aims and objectives of the College. While our children are in attendance, we will make every effort to offer our full support and cooperation in its programmes and activities.

To enable the College to provide for our child's education, we acknowledge that as parents we will, in the initial stages of the enrolment procedure, disclose any medical or psychological condition of our child which may impinge upon our child's academic performance or ability to participate fully in the activities of the College community. We consent to the College obtaining information about the above from our child's former school/s.

We understand that this Enrolment Application, if accepted by the College, will form part of the Enrolment Agreement. We have completed this Enrolment Application honestly and accurately and made full disclosure in respect of each question asked.

Mother/Guardian Signature.....

Date

Father/Guardian Signature.....

Date

A non-refundable application fee of \$100 should accompany this enrolment application.

CREDIT CARD PAYMENT

☐ Mastercard ☐ VISA Amount \$

Card No Expiry Date.....

Cardholder's Name

Signature.....

Please return for

Rothwell Campus

Principal
Grace Lutheran College
PO Box 3181
Clontarf DC QLD 4019
Telephone: 07 3203 0066

Caboolture Campus

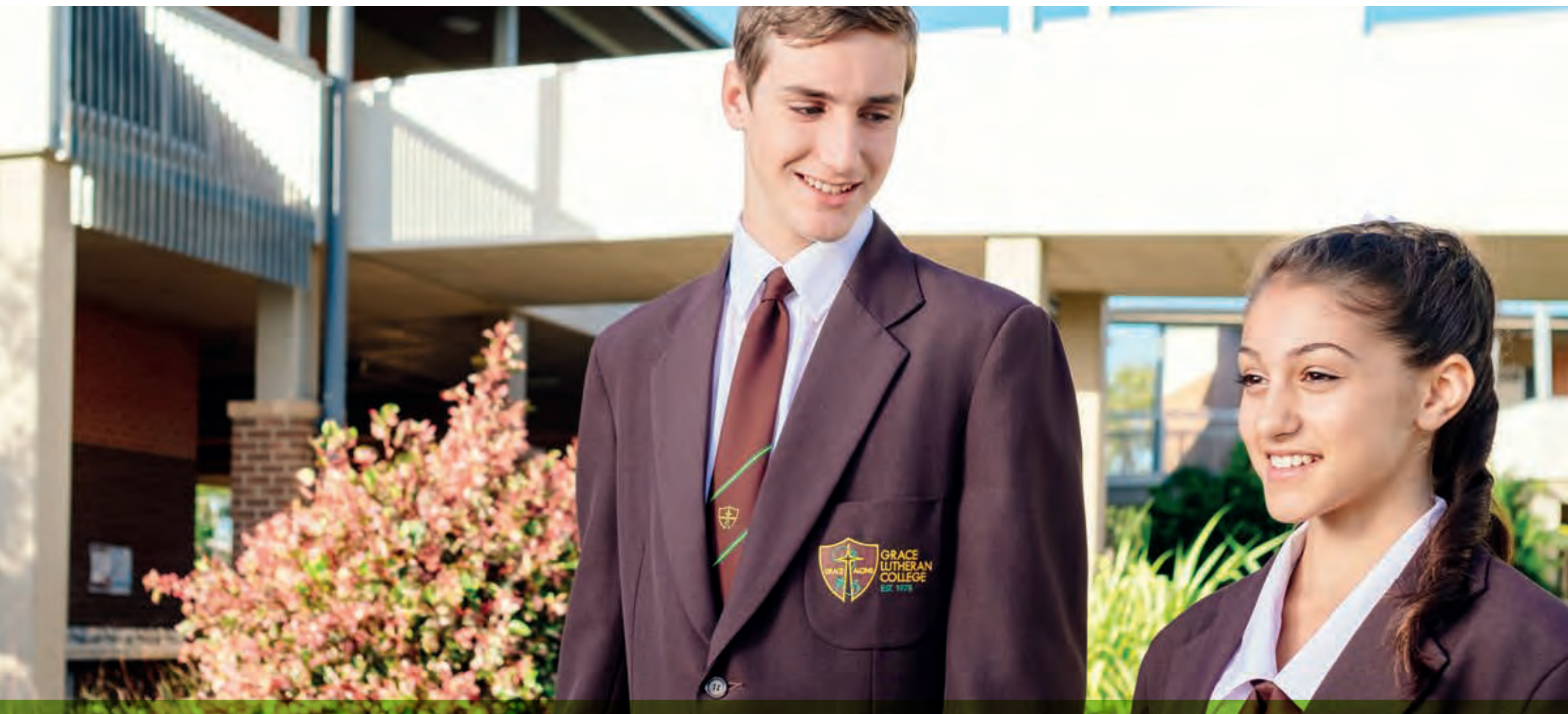
Head of Caboolture Campus
Grace Lutheran College
PO Box 1424
Caboolture QLD 4510
Telephone: 07 54952444

OFFICE USE ONLY

Date Received for Grade in

Fee Receipt No

PC SC N F S (A O P Ph)





GRACE
LUTHERAN
COLLEGE
EST. 1978

Rothwell Campus

Anzac Avenue Rothwell QLD 4022
PO Box 3181 Clontarf DC QLD 4019
Phone 07 3203 0066
grace@glc.qld.edu.au
gracecollege.com.au

Caboolture Campus

129 Toohey Street Caboolture QLD 4510
PO Box 1424 Caboolture QLD 4510
Phone 07 5495 2444
enquiries_cc@glc.qld.edu.au
gracecollege.com.au

